



Filter Housings - 10" Jumbo

Whole-house filtration system

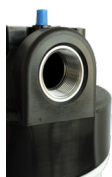


Features

- 100% virgin materials – polypropylene or acrylonitrile styrene (AS)
- O-ring: EPDM
- No chemicals added, ensuring housings are sterile and hygienic
- No injection molding releasing agents used in manufacturing
- Single recess top mounted O-ring design prevents pinching and leaks
- Built-in pressure relief / air bleed button (optional)
- Equipped with filter cartridge centering plug to ensure zero bypass
- Supplied with cap mounting bolt kit



Does your water source suffer from contaminants, sediment, or odors? GWS filter housings are the first step in solving your drinking water needs. Built with the highest quality virgin materials and reinforced to withstand the highest pressures, our filter housings can be used with a wide assortment of cartridges and media for applications in homes, restaurants, industry, and anywhere clean drinking water is a must.



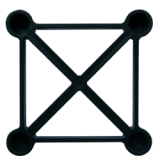
Optional 1" stainless steel connection feature



Housing cap with Pressure Relief Valve (PRV)



Housing cap mounting bolt hole design



PRV protection plate for protection during shipping



Single recess top mounted O-ring



Removable filter cartridge centering plug

* check with a GWS Sales representative for more information

Where Water Gets Better

Models

Model Number	Connection	PRV	Filter Size	Cap Color	Sump Color	Box qty
10" Jumbo Housings						
NPT						
HP07V-6N-KB	3/4" NPT	Yes	10"	Black	Blue	6
HP07V-6N-KC	3/4" NPT	Yes	10"	Black	Clear	6
HP07V-8N-KB	1" NPT	Yes	10"	Black	Blue	6
HP07V-8N-KC	1" NPT	Yes	10"	Black	Clear	6
HP07V-12N-KB	1½" NPT	Yes	10"	Black	Blue	6
HP07V-12N-KC	1½" NPT	Yes	10"	Black	Clear	6

Specifications

Product Series Name	Filter Housings 10" Jumbo
Min. Operating Temperature	4.4°C / 40°F
Max. Operating Temperature	40°C / 104°F
Maximum Pressure	Polypropylene: 8.6 bar 125 psi AS (clear): 6.9 bar 100 psi
Connection	3/4", 1" (1-1/4", and 1-1/2" available upon request)

NSF certification listing not applicable for AS (clear) housings



Filter Housings - 20" Jumbo

Whole-house filtration system

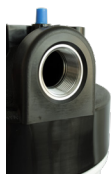


Features

- 100% virgin materials – polypropylene or acrylonitrile styrene (AS)
- O-ring: EPDM
- No chemicals added ensuring housings are sterile and hygienic
- No injection molding releasing agents used in manufacturing
- Single recess top mounted O-ring design prevents O-ring pinching and leaks
- Built-in pressure relief / air bleed button (optional)
- Equipped with filter cartridge centering plug to ensure zero bypass
- Supplied with cap mounting bolt kit



Does your water source suffer from contaminants, sediment, or odors? GWS filter housings are the first step in solving your drinking water needs. Built with the highest quality virgin materials and reinforced to withstand the highest pressures, our filter housings can be used with a wide assortment of cartridges and media for applications in homes, restaurants, industry, and anywhere clean drinking water is a must.



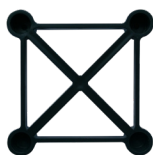
Optional 1" stainless steel connection feature*



Housing cap with Pressure Relief Valve (PRV)



Housing cap mounting bolt hole design



PRV protection plate for protection during shipping



Single recess top mounted O-ring



Removable filter cartridge centering plug

* check with a GWS Sales representative for more information

Where Water Gets Better

Models

Model Number	Connection	PRV	Filter Size	Cap Color	Sump Color	Box qty
20" Jumbo Housings						
NPT						
HP08V-6N-KB	3/4" NPT	Yes	20"	Black	Blue	4
HP08V-6N-KC	3/4" NPT	Yes	20"	Black	Clear	4
HP08V-8N-KB	1" NPT	Yes	20"	Black	Blue	4
HP08V-8N-KC	1" NPT	Yes	20"	Black	Clear	4
HP08V-12N-KB	1½" NPT	Yes	20"	Black	Blue	4
HP08V-12N-KC	1½" NPT	Yes	20"	Black	Clear	4

Specifications

Product Series Name	Filter Housings 20" Jumbo
Min. Operating Temperature	4.4°C / 40°F
Max. Operating Temperature	40°C / 104°F
Max. Operating Pressure	Polypropylene: 8.6 bar 125 psi AS (clear): 6.9 bar 100 psi
Connection	3/4", 1", and 1-1/2"

NSF certification listing not applicable for AS (clear) housings